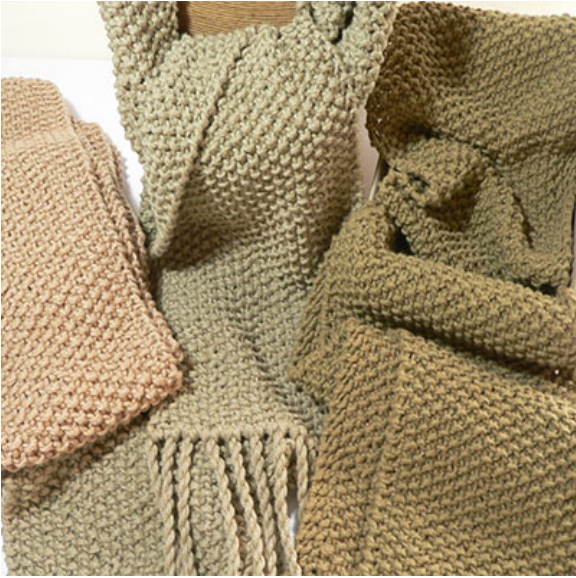
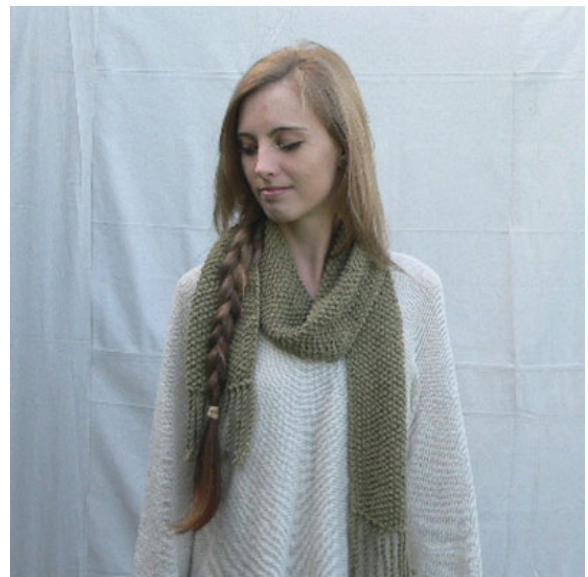


Wool & Cotton Road

Moss Scarf Knitting Pattern



Pakucho Organic Cotton 10ply



Pakucho Organic Cotton Forest

Measurements

Approximately 145cm/ 57 inches - length, 16cm/ 6.25 inches – width

If you would like to make a wider scarf increase the cast on stitches by multiples of 2, keep the cast on as an odd number for moss stitch. Remember to increase the amount of yarn purchased.

Materials

Organic cotton 10 ply (Worsted) x 3 x 50gm balls

http://www.woolandcottonroad.com.au/store/yarn/organic-cotton/pakucho_organic_cotton

Needle sizes

6.5mm (US 3) needle - OR THE REQUIRED SIZE TO GIVE CORRECT TENSION

Knitters needle for sewing ends.

Tension

The scarf has been designed for a tension of approximately 16sts and 21 rows to 10cm/4 inches over moss stitch using 6.5mm needles.

If the stitches are too small use larger needles to get required tension

If the stitches are too large use smaller needles to get required tension

Abbreviations

cm	centimetres
gm	grams
p	purl
k	knit
ktbl	knit through back of loop (twists the stitch)
sts	stitches

Notes:

To achieve a straight neat edge for the scarf it is important that the **first stitch of each row is slipped knit wise and the last stitch of each row is knitted into the back loop of the stitch.**

Cast On:

27 stitches using the thumb cast on method.

Pattern:

Row 1: Slip 1st stitch knit wise, * k1, p1* repeat from * to * until the last 2 stitches – k1, ktbl.

Repeat row 1 until the scarf measures approximately 145cm/ 57inches or desired length.

Cast off, sew in any yarn ends.

Fringe:

Cut 56 x 30cm lengths of yarn. This will give 14 tassels on each end of the scarf.

Each tassel will have 2 lengths of yarn.

Fold these 2 lengths in half and with a crochet hook pull them through the cast on/off stitch.

The tassels will be placed in each corner and through every second cast on/off stitch in between.

An excellent explanation of how to attach the lengths of yarn to your scarf can be found here: <http://www.wikihow.com/Add-Fringe-to-a-Crochet-or-Knit-Project>

Once attached the easiest way to twist the yarn is with a fringe twister, saves so much time!!



<http://www.bbyarn.com/Accessories.html>

One tassel will now have 4 pieces of yarn (2 strands doubled over).

On each of the clips place 2 strands of yarn from the one tassel. I wind the handle approximately 14 times clock wise.

Carefully take the wound yarn off each of the clips and knot together.



When you let go the 2 x 2 twisted strands will wind together.

Trim the ends of the yarn.

The pattern and photographs contained in this document are the property of Wool & Cotton Road ©. This pattern is available for personal use only. No unauthorised reproduction or distribution, in whole or part, of this pattern is allowed. Items created from this pattern are not to be sold in any capacity.

If you require help with this pattern please feel free to contact me at:
<http://www.woolandcottonroad.com.au/contact>